

# **Hampshire and the Isle of Wight**

**Performance Report**  
August 2018



# Unscheduled Care: A&E performance

HIoW



Overview

**Unscheduled Care**

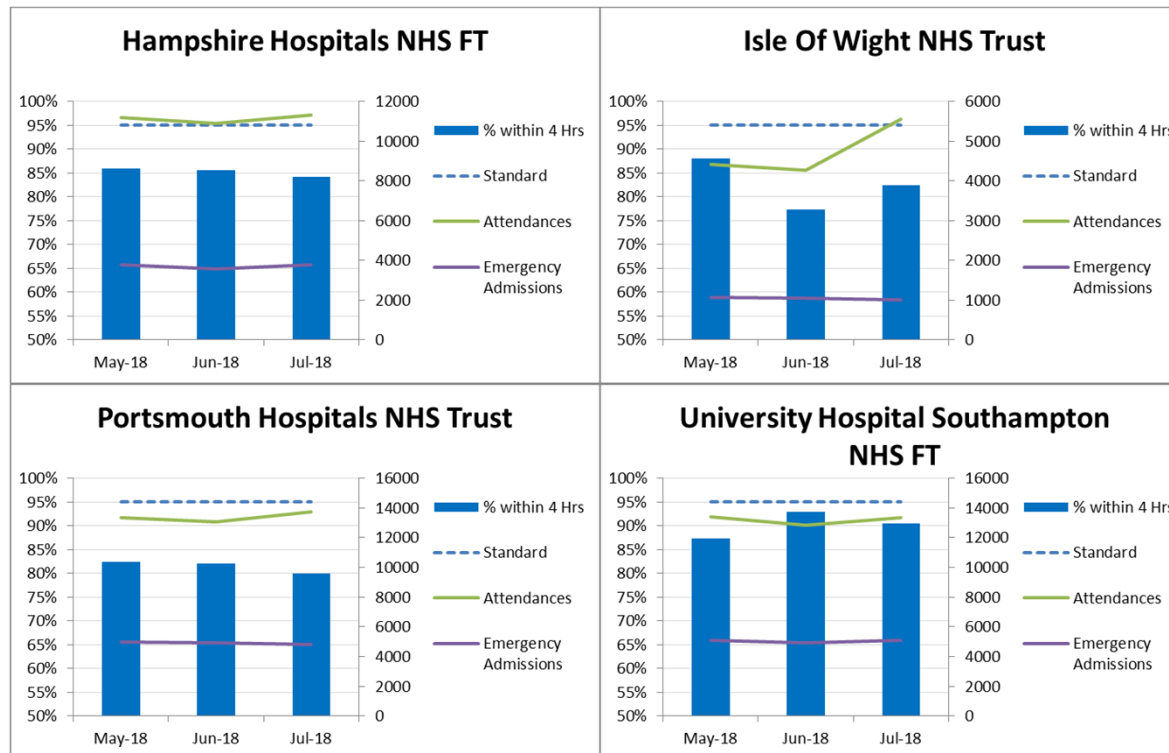
Planned Care

Discharges

Mental Health

## A&E four-hour performance.

A&E Performance	A&E Percentage within 4 Hrs (all types)					Over 12 Hrs Trolley Waits			
	Standard	May-18	Jun-18	Jul-18	Trend	May-18	Jun-18	Jul-18	Trend
Hampshire Hospitals NHS FT	95%	85.8%	85.6%	84.2%		1			
Isle Of Wight NHS Trust	95%	88.0%	77.4%	82.4%					
Portsmouth Hospitals NHS Trust	95%	82.3%	82.1%	80.0%		2			
University Hospital Southampton NHS FT	95%	87.4%	93.0%	90.5%		1	1	4	



# Unscheduled Care: 111 & Ambulance

HIoW



Overview

Unscheduled Care

Planned Care

Discharges

Mental Health

## 111 & Ambulance

South Central		Jul-18			Isle of Wight		Jul-18		
indicator	Count of Incidents	Total (hours)	Mean (min:sec)	90th centile (min:sec)	indicator	Count of Incidents	Total (hours)	Mean (min:sec)	90th centile (min:sec)
Category 1	2,545	305	7:12	12:52	Category 1	42	7	9:47	19:35
Category 1T	1,530	275	10:47	20:39	Category 1T	26	5	10:26	19:35
Category 2	21,742	6,132	16:55	0:33:44	Category 2	699	191	16:25	0:43:10
Category 3	14,977	14,255	0:57:07	2:15:01	Category 3	777	724	0:55:56	2:23:12
Category 4	1,224	1,650	1:20:52	3:01:16	Category 4	470	554	1:10:42	3:04:57
1 hour response	1,906	1,426	0:44:53	1:17:04	1 hour response	68	75	1:06:22	3:25:34
2 hour response	1,270	1,983	1:33:40	2:44:00	2 hour response	41	79	1:55:01	3:37:42
3 hour response	0	0	-	-	3 hour response	0	0	-	-
4 hour response	389	915	2:21:12	4:26:35	4 hour response	13	30	2:16:18	5:24:44

Mainland Ship NHS 111					
	Standard	May-18	Jun-18	Jul-18	Trend
Answered Calls		48,694	44,267	45,827	
Percentage Calls Answered Within 60 secs	95%	87.0%	86.6%	79.7%	
Percentage Calls Abandoned After 30 secs		1.5%	1.6%	2.6%	

Isle of Wight NHS 111					
	Standard	May-18	Jun-18	Jul-18	Trend
Answered Calls		6,778	6,576	6,879	
Percentage Calls Answered Within 60 secs	95%	96.0%	96.5%	93.7%	
Percentage Calls Abandoned After 30 secs		2.1%	1.7%	3.0%	

# Planned Care: RTT performance

HIoW



Overview

Unscheduled Care

Planned Care

Discharges

Mental Health

## Latest published RTT incomplete performance (%)

RTT Provider	RTT % Within 18 Weeks					RTT 52 week Breaches			
	Standard	Apr-18	May-18	Jun-18	Trend	Apr-18	May-18	Jun-18	Trend
Hampshire Hospitals NHS FT	92%	90.5%	91.0%	90.7%		1		1	
Isle Of Wight NHS Trust	92%	84.1%	85.2%	85.1%					
Portsmouth Hospitals NHS Trust	92%	85.9%	86.6%	85.9%		1	1	1	
Southampton NHS Treatment Centre	92%	94.0%	95.4%	95.1%					
Southern Health NHS FT	92%	94.5%	95.5%	95.1%					
University Hospital Southampton NHS FT	92%	86.5%	87.6%	87.7%		9	6	6	

RTT CCG	RTT % Within 18 Weeks					RTT 52 week Breaches			
	Standard	Apr-18	May-18	Jun-18	Trend	Apr-18	May-18	Jun-18	Trend
NHS Fareham and Gosport CCG	92%	87.1%	88.0%	87.6%			1	1	
NHS Isle of Wight CCG	92%	83.7%	84.4%	84.3%					
NHS North Hampshire CCG	92%	90.0%	90.6%	90.9%				1	
NHS Portsmouth CCG	92%	87.4%	88.1%	87.3%		2		1	
NHS South Eastern Hampshire CCG	92%	87.7%	88.3%	87.7%					
NHS Southampton CCG	92%	88.7%	90.3%	90.5%		2	1	2	
NHS West Hampshire CCG	92%	90.2%	90.9%	90.8%		8	3	4	

## E-Referral Coverage

AT Name	Feb-18	Mar-18	Apr-18	Trend
NHS FAREHAM AND GOSPORT CCG	38%	39%	44%	
NHS ISLE OF WIGHT CCG	55%	61%	70%	
NHS NORTH HAMPSHIRE CCG	69%	70%	77%	
NHS PORTSMOUTH CCG	38%	44%	52%	
NHS SOUTH EASTERN HAMPSHIRE CCG	27%	32%	40%	
NHS SOUTHAMPTON CCG	52%	53%	67%	
NHS WEST HAMPSHIRE CCG	69%	69%	72%	

# Planned Care: Cancer performance

HloW



Overview

Unscheduled Care

Planned Care

Discharges

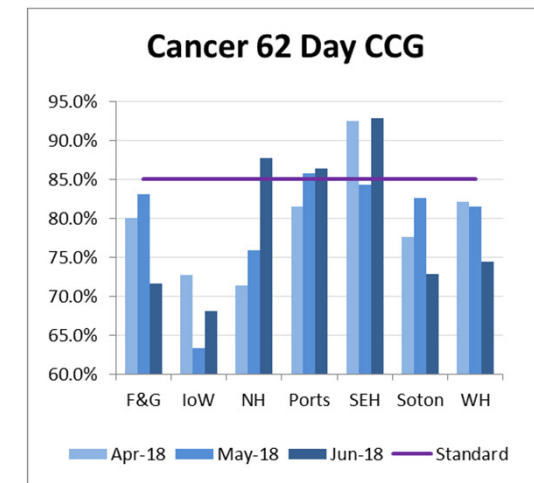
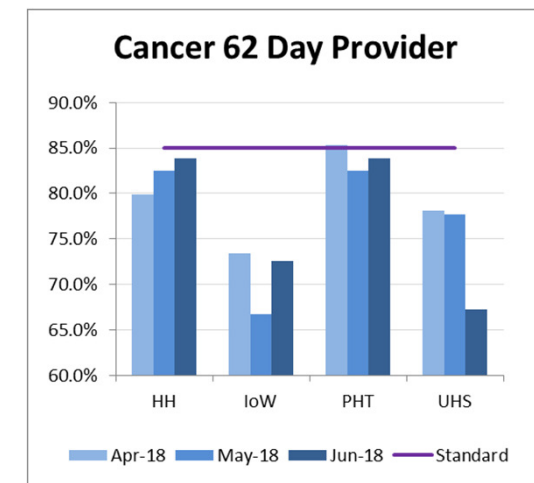
Mental Health

## Cancer 62d performance

Cancer 62 Day Provider	% Within 62 Days All Cancers				
	Standard	Apr-18	May-18	Jun-18	Trend
Hampshire Hospitals NHS FT	85%	79.9%	82.5%	83.9%	
Isle Of Wight NHS Trust	85%	73.4%	66.7%	72.6%	
Portsmouth Hospitals NHS Trust	85%	85.3%	82.5%	83.9%	
University Hospital Southampton NHS FT	85%	78.1%	77.7%	67.2%	

Cancer 62 Day CCG	% Within 62 Days All Cancers				
	Standard	Apr-18	May-18	Jun-18	Trend
NHS Fareham and Gosport CCG	85%	80.0%	83.0%	71.7%	
NHS Isle of Wight CCG	85%	72.7%	63.3%	68.1%	
NHS North Hampshire CCG	85%	71.4%	75.9%	87.8%	
NHS Portsmouth CCG	85%	81.5%	85.7%	86.4%	
NHS South Eastern Hampshire CCG	85%	92.5%	84.3%	92.9%	
NHS Southampton CCG	85%	77.6%	82.6%	72.9%	
NHS West Hampshire CCG	85%	82.1%	81.4%	74.5%	

62 Day Pathways	By Exception (85%)				
	Standard	HHFT	IoW	PHT	UHS
Jun-18					
Brain/Central Nervous System	85%				
Breast	85%			84.1%	57.1%
Gynaecological	85%	80.0%		83.3%	53.3%
Haematological (Excluding Acute Leukaemia)	85%				56.0%
Head & Neck	85%	66.7%	66.7%	80.0%	42.9%
Lower Gastrointestinal	85%		25.0%	73.3%	60.6%
Lung	85%	80.0%			67.9%
Other	85%				
Sarcoma	85%				33.3%
Skin	85%				
Upper Gastrointestinal	85%	77.8%			
Urological (Excluding Testicular)	85%	50.8%	20.0%	69.9%	52.9%



# Planned Care: Diagnostics performance DToc

Overview

Unscheduled Care

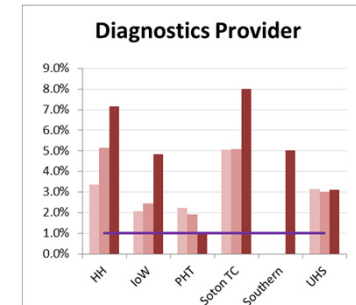
Planned Care

Discharges

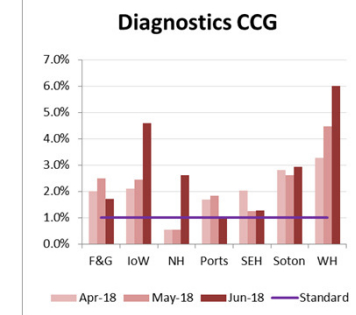
Mental Health

## Diagnostics & DToc

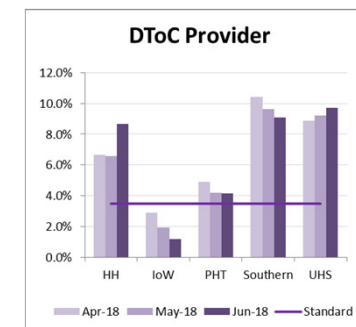
Diagnostics Provider	Actual Current % Diagnostic Waits Over 6 weeks				
Provider	Standard	Apr-18	May-18	Jun-18	Trend
Hampshire Hospitals NHS FT	1.0%	3.4%	5.2%	7.1%	
Isle Of Wight NHS Trust	1.0%	2.1%	2.5%	4.8%	
Portsmouth Hospitals NHS Trust	1.0%	2.2%	1.9%	1.0%	
Southampton NHS Treatment Centre	1.0%	5.0%	5.1%	8.0%	
Southern Health NHS FT	1.0%	0.0%	0.0%	5.0%	
University Hospital Southampton NHS FT	1.0%	3.1%	3.0%	3.1%	



Diagnostics CCG	Actual Current % Diagnostic Waits Over 6 weeks				
CCG	Standard	Apr-18	May-18	Jun-18	Trend
NHS Fareham and Gosport CCG	1.0%	2.0%	2.5%	1.7%	
NHS Isle of Wight CCG	1.0%	2.1%	2.4%	4.6%	
NHS North Hampshire CCG	1.0%	0.6%	0.5%	2.6%	
NHS Portsmouth CCG	1.0%	1.7%	1.8%	1.0%	
NHS South Eastern Hampshire CCG	1.0%	2.0%	1.2%	1.3%	
NHS Southampton CCG	1.0%	2.8%	2.6%	2.9%	
NHS West Hampshire CCG	1.0%	3.3%	4.5%	6.0%	



DToc Provider	Bed Day Delays per Occupied Bed				
Provider	Standard	Apr-18	May-18	Jun-18	Trend
Hampshire Hospitals NHS FT	3.5%	6.7%	6.6%	8.7%	
Isle Of Wight NHS Trust	3.5%	2.9%	1.9%	1.2%	
Portsmouth Hospitals NHS Trust	3.5%	4.9%	4.2%	4.2%	
Southern Health NHS FT	3.5%	10.4%	9.6%	9.1%	
University Hospital Southampton NHS FT	3.5%	8.9%	9.2%	9.7%	



# Mental Health: Dementia performance

## IAPT

HIoW



Overview

Unscheduled Care

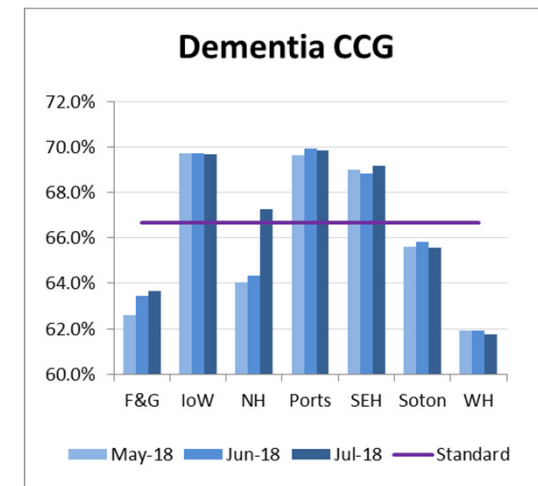
Planned Care

Discharges

Mental Health

### Dementia & IAPT

Dementia CCG	Actual Current Dementia Diagnosis Rate				
	Standard	May-18	Jun-18	Jul-18	Trend
CCG					
NHS Fareham and Gosport CCG	66.7%	62.6%	63.5%	63.7%	
NHS Isle of Wight CCG	66.7%	69.7%	69.7%	69.7%	
NHS North Hampshire CCG	66.7%	64.1%	64.3%	67.2%	
NHS Portsmouth CCG	66.7%	69.6%	69.9%	69.8%	
NHS South Eastern Hampshire CCG	66.7%	69.0%	68.8%	69.2%	
NHS Southampton CCG	66.7%	65.6%	65.8%	65.6%	
NHS West Hampshire CCG	66.7%	61.9%	61.9%	61.7%	



IAPT CCG	Rolling Quarterly IAPT Access Rates - C					Rolling Quarterly IAPT Recovery Rate - C				
	Standard	Mar-18	Apr-18	May-18	Trend	Standard	Mar-18	Apr-18	May-18	Trend
CCG										
NHS Fareham and Gosport CCG	3.75%	3.5%	3.2%	3.7%		50.0%	46.2%	47.1%	49.3%	
NHS Isle of Wight CCG	3.75%	4.4%	4.4%	4.5%		50.0%	53.1%	54.2%	58.1%	
NHS North Hampshire CCG	3.75%	3.4%	3.1%	3.4%		50.0%	48.3%	52.8%	51.7%	
NHS Portsmouth CCG	3.75%	5.0%	4.8%	4.9%		50.0%	57.3%	56.3%	58.0%	
NHS South Eastern Hampshire CCG	3.75%	3.4%	2.9%	3.1%		50.0%	46.2%	45.0%	47.5%	
NHS Southampton CCG	3.75%	3.9%	3.8%	3.9%		50.0%	52.9%	50.8%	49.0%	
NHS West Hampshire CCG	3.75%	4.0%	3.5%	3.7%		50.0%	46.6%	46.2%	49.1%	

# Mental Health: EIP OAP

HIoW



Overview

Unscheduled Care

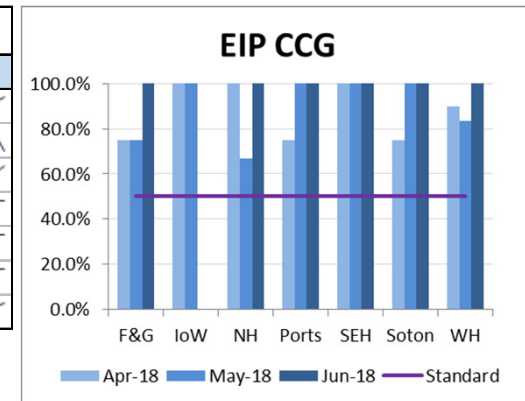
Planned Care

Discharges

Mental Health

## EIP & OAP

EIP CCG	People started Treatment within 2 weeks %				
	Standard	Apr-18	May-18	Jun-18	Trend
NHS Fareham and Gosport CCG	50.0%	75.0%	75.0%	100.0%	
NHS Isle of Wight CCG	50.0%	100.0%	100.0%		
NHS North Hampshire CCG	50.0%	100.0%	66.7%	100.0%	
NHS Portsmouth CCG	50.0%	75.0%	100.0%	100.0%	
NHS South Eastern Hampshire CCG	50.0%	100.0%	100.0%	100.0%	
NHS Southampton CCG	50.0%	75.0%	100.0%	100.0%	
NHS West Hampshire CCG	50.0%	90.0%	83.3%	100.0%	



Number of OAP days in three month period ending:			
Org Name	Mar-18	Apr-18	May-18
NHS Fareham and Gosport CCG	600	680	500
NHS Isle of Wight CCG	-	-	-
NHS North Hampshire CCG	110	140	130
NHS Portsmouth CCG	25	-	20
NHS South Eastern Hampshire CCG	330	325	340
NHS Southampton CCG	620	815	875
NHS West Hampshire CCG	675	915	1,215

